

UNIVERSITETET I BERGEN

Publikasjoner fra

GEOFYSISK INSTITUTT, AVD. C

Nr. 2

GURO GJELLESTAD and HELGE DALSEIDE

THE MAGNETIC STATION AT DOMBÅS

($\varphi=62^{\circ}04'.4$ N, $\lambda=9^{\circ}07'.0$ E Gr.)

OBSERVATIONS 1960

1962

A.S JOHN GRIEGS BOKTRYKKERI, BERGEN



UNIVERSITETET I BERGEN

Publikasjoner fra

GEOFYSISK INSTITUTT, AVD. C

Nr. 2

GURO GJELLESTAD and HELGE DALSEIDE

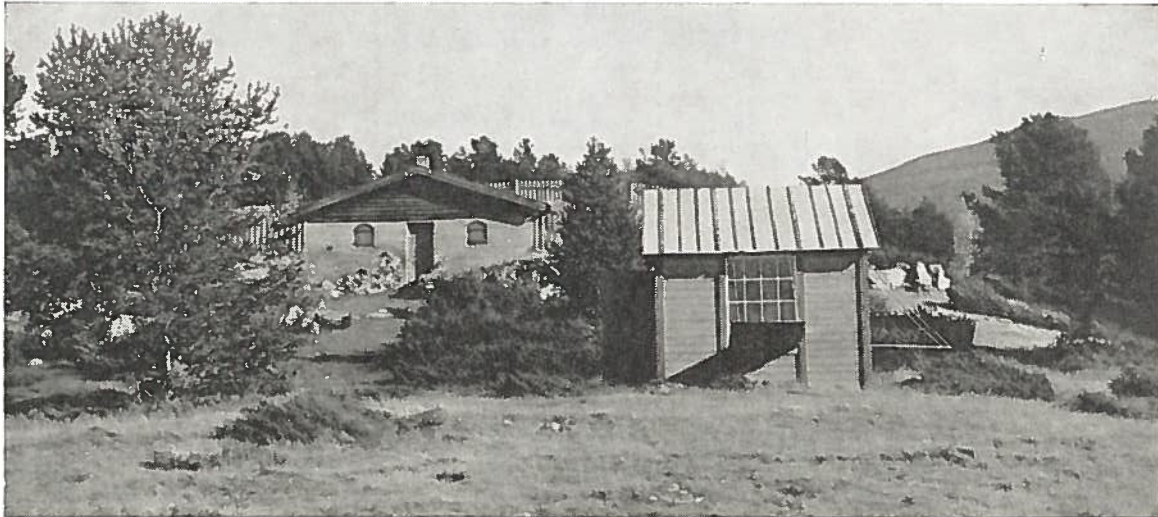
THE MAGNETIC STATION AT DOMBÅS

($\varphi=62^{\circ}04'.4$ N, $\lambda=9^{\circ}07'.0$ E Gr.)

OBSERVATIONS 1960

1962

A.S JOHN GRIEGS BOKTRYKKERI, BERGEN



INTRODUCTORY REMARKS

We refer to "Publikasjoner fra Det Norske Institutt for Kosmisk Fysikk" No. 39, Chap. I, in which has been given general information on instruments and installations at the station, evaluation of the performance of the instruments and accuracy of observations.

At *Dombås* Mr. *Knut Einbu* supervised the instruments and made magnetic measurements. Scalings of the magnetograms for hourly mean values were undertaken by author II with the assistance of Messrs. *J. Njåstad* and *J. Breistein*.

Adopted scale values are given in *Table 1*. In *Table 1* the scale value $9.60\gamma/\text{mm}$ (for *D*) is equivalent to 2.4 minutes of arc per mm.

In *Tables 4–6* are given adopted base line values, while the diagram in *Figure 1* gives both observed and adopted base line values. In the diagram large dots represent points of greater weight than the average, while open circles represent points of less weight.

During the interval August–December several baseline jumps took place, due to mechanical disturbances at the *H*-variometer. While we believe that the monthly mean values (*M*, *MQ*, *MD*) are essentially correct, some uncertainty may be present in some of the individual hourly values or daily means during this interval.

In the following are given tables of *absolute hourly mean values* in three elements, *D*, *H* and *Z* and *daily* and *hourly means* for all days and for the 5 international quiet and disturbed days. In *Table 2* are given *monthly* and *annual means* for 1960 for all days and for the 5 international quiet and disturbed days, and in *Table 3* annual means (all days) for the period 1952–1960.

Scalings of magnetograms for hourly mean values have been centered around half-hours, and Universal Time (GMT) has been used consistently in the tables. Calculations and printing of magnetic tables have been performed on punched-card IBM machines at the Institute.

Geofysisk institutt, avd. C, co-operates with the international central institute at De Bilt and with the Committee on Rapid Variations and Earth Currents of IAGA regarding K-indices and C-data for activity, sudden commencements, solar flare effects, etc., and for those data we refer to the IAGA Bulletin.

TABLE 1
ADOPTED SCALE VALUES 1960

D γ/mm	H γ/mm	Z γ/mm
9.60	8.85	6.45

TABLE 2
MONTHLY AND ANNUAL MEANS

1960	All days			Quiet days			Disturbed days		
	D	H	Z	D	H	Z	D	H	Z
Jan	4°40'.3 W	13949 γ	47739 γ	4°41'.1 W	13957 γ	47735 γ	4°38'.4 W	13935 γ	47743 γ
Feb	40.4	955	737	40.8	960	733	40.3	950	737
Mar	40.1	953	735	40.3	959	734	38.6	929	723
Apr	37.1	926	742	39.5	951	743	33.0	893	721
May	38.6	954	751	38.6	961	746	36.1	946	757
Jun	38.8	954	735	39.5	962	745	36.3	927	718
Jul	38.5	954	744	39.0	964	741	36.6	928	753
Aug	38.6	949	740	39.1	952	740	37.6	923	722
Sep	36.2	938	747	37.5	952	753	32.4	903	745
Oct	35.4	934	758	37.7	958	764	31.6	885	736
Nov	34.6	928	772	36.4	949	775	25.8	834	761
Dec	36.3	948	775	36.9	956	777	34.2	935	755
Mean	4°37'.9 W	13945 γ	47748 γ	4°38'.9 W	13957 γ	47749 γ	4°35'.1 W	13916 γ	47739 γ

TABLE 3
ANNUAL MEANS OF THE MAGNETIC ELEMENTS 1952-60

Year	D	H	Z
1952	5°20'.8 W	13871 γ	47500 γ
53	12.9	890	532
54	06.8	902	556
55	01.9	911	591
56	4°55'.4	908	624
57	50.6	916	647
58	46.6	929	678
59	42.7	938	712
1960	4°37'.9 W	13945 γ	47748 γ

TABLE 4
ADOPTED BASE LINE VALUES
DECLINATION 1960

Interval starting	Interval starting
Jan 1 4°54'.1	Dec 1 4°53'.9

TABLE 5
ADOPTED BASE LINE VALUES
HORIZONTAL INTENSITY 1960

Interval starting	Interval starting
Jan 1 13730 γ	Aug 26 13675 γ
6 729	Oct 5 665
21 728	Nov 8 592
Feb 5 727	Dec 1 539
20 726	3 392
Mar 6 725	15 712
21 724	17 711
Apr 5 723	18 710
20 722	20 709
May 5 721	21 708
20 720	23 707
Jul 1 719	24 706
17 718	26 705
Aug 1 717	27 704
13 716	29 703
21 13715 γ	30 13702 γ

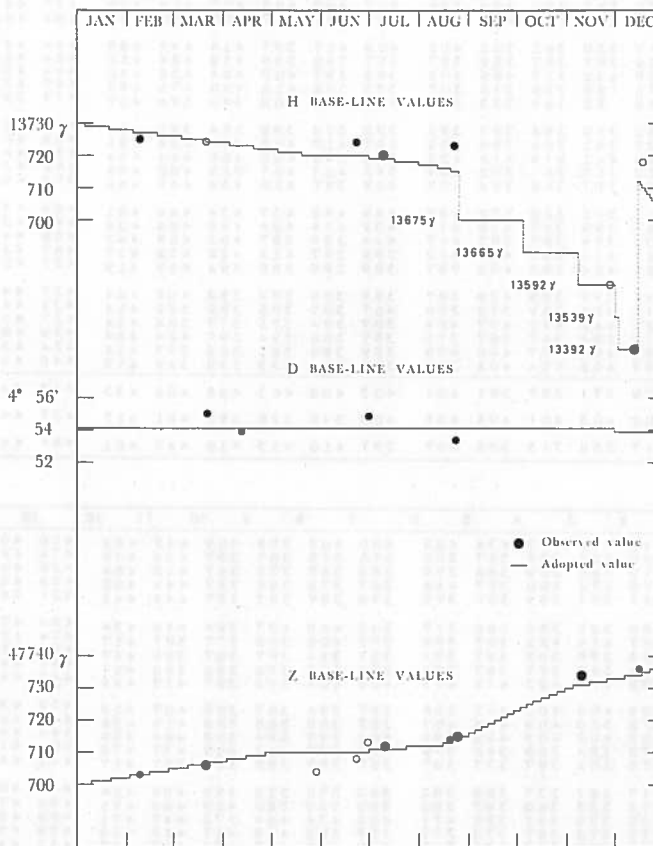


Fig. 1. Observed and adopted base-line values 1960.

TABLE 6
ADOPTED BASE LINE VALUES
VERTICAL INTENSITY 1960

Interval starting	Interval starting	Interval starting	Interval starting	Interval starting
Jan 1 47700 γ	Apr 3 47708 γ	Sep 1 47716 γ	Oct 3 47724 γ	Nov 14 47732 γ
10 701	15 709	5 717	7 725	26 733
22 702	27 710	9 718	11 726	Dec 7 734
Feb 3 703	Jul 1 711	13 719	16 727	18 735
15 704	24 712	17 720	21 728	23 736
27 705	Aug 16 713	21 721	26 729	28 47737 γ
Mar 10 706	22 714	25 722	31 730	
22 47707 γ	27 47715 γ	29 47723 γ	Nov 5 47731 γ	

Dombás

Declination. D = 4° W + Tabular Values expressed in Tenths of Minutes.

HOURLY MEAN VALUES

GMT

JANUARY 1960

Table for January 1960 showing hourly mean values for Dombás. Columns include DAY (0-31), hours (1-24), and MEAN. Rows are grouped by day (0-31) and include sub-rows for M, MQ, MD.

FEBRUARY

Table for February showing hourly mean values for Dombás. Columns include DAY (1-28), hours (1-24), and MEAN. Rows are grouped by day (1-28) and include sub-rows for M, MQ, MD.

MARCH

Table for March showing hourly mean values for Dombás. Columns include DAY (1-31), hours (1-24), and MEAN. Rows are grouped by day (1-31) and include sub-rows for M, MQ, MD.

Dombás

Declination. D = 4° W + Tabular Values expressed in Tenths of Minutes.

APRIL 1960

HOURLY MEAN VALUES

GMT

Table for April 1960 showing hourly mean values for declination. Columns include DAY (0-30), hours (1-24), and MEAN. Rows are grouped by day (0-30) and include sub-rows for minutes (M, MQ, MD).

MAY

Table for May 1960 showing hourly mean values for declination. Columns include DAY (0-31), hours (1-24), and MEAN. Rows are grouped by day (0-31) and include sub-rows for minutes (M, MQ, MD).

JUNE

Table for June 1960 showing hourly mean values for declination. Columns include DAY (0-30), hours (1-24), and MEAN. Rows are grouped by day (0-30) and include sub-rows for minutes (M, MQ, MD).

Dombås

Declination. D = 4° W + Tabular Values expressed in Tenths of Minutes.

Table for July 1960 showing hourly mean values for declination. Columns include Day, Hour (1-23), and Mean. Rows are grouped by day (1-31) and include sub-rows for M, MQ, MD.

Table for August 1960 showing hourly mean values for declination. Columns include Day, Hour (1-23), and Mean. Rows are grouped by day (1-31) and include sub-rows for M, MQ, MD.

Table for September 1960 showing hourly mean values for declination. Columns include Day, Hour (1-23), and Mean. Rows are grouped by day (1-30) and include sub-rows for M, MQ, MD.

Dombás

Declination. D = 4° W + Tabular Values expressed in Tenths of Minutes.

OCTOBER 1960

HOURLY MEAN VALUES

GMT

DAY	1	2	3	4	5	6	7	8	9	10	11	12	13	14	15	16	17	18	19	20	21	22	23	MEAN	
D 1	320	248	146	320	372	412	496	469	367	417	437	442	444	454	412	457	367	367	280	303	300	166	298	285	357
D 2	263	233	227	293	414	476	514	496	444	389	394	424	337	409	337	370	340	324	250	362	372	370	382	317	367
D 3	352	337	340	357	357	365	380	365	347	365	360	404	392	417	412	392	347	347	280	303	300	166	298	285	367
D 4	330	342	362	362	365	365	362	370	382	382	392	414	444	444	407	407	407	407	218	372	372	370	340	356	364
D 5	243	317	337	322	347	422	370	370	355	350	377	417	429	424	409	412	372	268	365	389	377	370	211	49	363
D 6	260	290	248	419	581	278	330	372	397	417	437	444	439	511	243	640	889	797	218	504	404	49	-577	-949	318
D 7	-701	-5	-217	-515	32	39	429	283	275	362	357	402	427	375	342	280	380	218	337	342	409	345	64	151	186
D 8	208	293	387	293	305	337	315	312	315	362	357	402	439	370	340	362	342	315	320	168	221	161	270	293	312
D 9	240	345	245	365	392	370	397	392	330	362	375	387	429	432	367	330	367	385	347	268	283	265	263	285	345
D 10	250	258	255	330	322	320	317	317	317	335	352	392	412	412	389	367	355	350	762	322	293	265	263	285	343
D 11	399	375	342	310	317	385	347	382	392	362	389	419	454	484	442	442	412	375	370	370	298	295	352	372	379
D 12	367	365	362	360	350	350	349	327	325	342	392	419	412	437	417	402	399	399	407	372	385	380	320	370	373
D 13	362	365	357	352	347	342	339	322	317	345	370	419	412	437	417	402	399	399	407	372	385	380	320	370	373
D 14	365	365	365	360	352	350	347	342	335	337	365	412	412	437	424	409	402	392	394	382	387	385	370	370	373
D 15	362	347	342	345	340	340	345	345	340	362	412	469	486	514	491	491	536	519	519	392	312	268	278	290	380
D 16	317	342	320	345	340	342	348	345	335	345	367	404	442	464	422	397	397	392	387	385	385	372	342	322	369
D 17	308	322	347	347	342	342	357	345	345	345	357	382	402	429	402	385	387	387	372	322	350	365	352	317	363
D 18	332	352	355	300	300	300	318	317	342	370	394	417	444	464	454	392	387	419	370	317	312	173	245	303	359
D 19	300	317	340	317	345	382	382	387	342	370	394	417	419	419	419	392	382	394	392	345	312	168	243	327	348
D 20	362	362	367	367	357	357	362	345	365	367	409	442	447	459	466	469	409	392	370	365	367	303	196	268	373
D 21	317	350	342	342	342	342	342	342	367	387	412	422	432	422	394	382	375	387	387	375	342	275	305	350	364
D 22	365	362	360	360	360	362	352	335	332	345	382	409	427	422	417	394	397	397	392	387	375	372	372	370	377
D 23	365	362	362	362	360	360	350	335	342	347	375	394	422	412	409	394	397	397	409	402	385	347	320	370	377
D 24	345	345	347	347	340	340	347	347	347	370	394	432	444	437	437	397	462	484	454	394	367	325	347	370	384
D 25	347	352	357	357	357	357	357	348	342	412	444	442	466	539	497	429	471	884	462	350	-92	168	171	129	386
D 26	-92	268	32	268	385	447	347	404	394	382	389	417	414	407	419	337	382	362	367	352	320	315	380	340	338
D 27	168	315	295	315	317	347	409	372	362	340	370	347	432	432	392	317	320	295	268	330	318	205	280	230	316
D 28	332	367	417	293	392	397	469	419	417	380	380	367	404	402	434	422	377	268	273	315	345	340	394	370	374
D 29	305	412	337	360	340	362	375	355	347	375	394	417	434	377	437	417	327	298	280	317	290	315	317	293	352
D 30	370	377	439	367	360	360	367	360	350	360	345	345	442	454	385	342	273	308	347	243	211	305	330	412	358
D 31	444	342	332	350	370	387	367	370	360	370	372	367	437	362	355	375	337	337	144	337	293	380	320	372	347
M	274	324	308	311	350	356	369	370	356	367	386	409	430	454	404	401	400	394	362	350	315	290	270	271	354
MQ	365	365	361	359	354	352	345	334	330	346	378	409	427	430	421	404	401	396	399	388	382	366	356	369	377
MD	27	231	113	170	345	308	392	415	379	399	419	433	438	457	382	429	498	526	333	370	268	209	55	-9	316

NOVEMBER

DAY	1	2	3	4	5	6	7	8	9	10	11	12	13	14	15	16	17	18	19	20	21	22	23	MEAN	
D 1	362	340	367	367	365	345	385	342	342	355	382	404	409	414	414	392	389	389	380	367	322	342	290	317	368
D 2	352	362	387	367	342	367	367	370	367	392	404	429	444	444	417	394	385	375	367	330	315	285	280	305	366
D 3	342	432	342	315	337	347	347	340	342	367	392	412	429	422	417	392	385	367	367	368	281	168	139	74	336
D 4	94	168	67	223	447	337	397	325	342	345	437	414	402	449	462	265	414	385	268	268	280	275	240	283	314
D 5	362	342	352	392	389	372	372	372	370	394	389	397	397	367	367	355	367	367	362	360	347	357	347	350	369
D 6	355	355	362	360	367	357	372	367	367	392	417	402	392	382	367	362	355	357	367	335	295	340	342	350	363
D 7	367	350	399	367	365	395	409	372	355	360	385	394	392	394	375	367	367	367	367	367	367	360	360	362	372
D 8	367	367	370	370	367	365	357	357	355	360	385	397	399	399	392	387	387	389	382	375	367	332	298	362	366
D 9	347	342	365	365	367	365	350	360	365	365	399	397	422	424	409	392	389	387	382	372	365	340	325	347	372
D 10	367	367	367	367	367	365	352	342	340	337	394	444	469	491	469	484	437	417	417	399	389	372	370	360	395
D 11	370	370	392	385	382	382	382	367	342	367	417	437	412	417	397	392	385	385	370	372	372	370	347	280	379
D 12	270	337	315	362	367	367	367	367	367	367	380	377	412	417	494	481	496	591	740	672	588	546	176	211	418
D 13	193	-55	-204	312	312	312	-267	367	355	367	380	377	384	417	397	392	385	385	156	253	385	188	327	139	98
D 14	-80	-155	250	320	317	317	300	317	-150	-169	-651	44	94	342	350	317	243	457	173	417	380	317	285	303	877
D 15	317	293	298	345	342	342	367	317	317	330	325	332	384	370	340	303	367	268	514	367	265	273	201	305	363
D 16	-217	-80	-18	-167	347	253	293	233	275	310	325	325	367	320	357	278	350	342	320	263	295	345	340	360	248
D 17	402	402	380	340	345	345	345	345	330	342	367	380	347	337	345	317	263	221	208	352	342	293	273	310	360
D 18	305	340	340	342	325	327	330	330	330	340	350	365	385	370	362	355	362	360	357	355	347	347	345	345	348
D 19	345	407	347	347	347	340	357	355	352	350	375	399	399	392	382	372	367	362	360	355	360	360	360	365	363
D 20	380	389	389	392	394	394	387	380	367	392	417	397	397	394	370	365	370	372	360	357	345	342	347	345	377
D 21	342	355	362	362	365	452	516	394	325	365	394	407	409	419	466	442	437	288	536	268					

Dombás

Horizontal Intensity. H = 13000 γ + Tabular Values.

APRIL 1960

HOURLY MEAN VALUES.

GMT

Table for April 1960 showing hourly mean values for days 1 through 30. Columns include DAY, hours 1-24, and MEAN. Rows are grouped by day (1-30) and month (M, MQ, MD).

Table for May 1960 showing hourly mean values for days 1 through 31. Columns include DAY, hours 1-24, and MEAN. Rows are grouped by day (1-31) and month (M, MQ, MD).

Table for June 1960 showing hourly mean values for days 1 through 30. Columns include DAY, hours 1-24, and MEAN. Rows are grouped by day (1-30) and month (M, MQ, MD).

Dombås

Horizontal Intensity. H = 13000 γ + Tabular Values.

JULY 1960

HOURLY MEAN VALUES.

GMT

Table for July 1960 showing hourly mean values for Dombås. Columns include DAY, hours 1-24, and MEAN. Rows are grouped by day (1-31) and include summary rows M, MQ, MD.

AUGUST

Table for August 1960 showing hourly mean values for Dombås. Columns include DAY, hours 1-24, and MEAN. Rows are grouped by day (1-31) and include summary rows M, MQ, MD.

SEPTEMBER

Table for September 1960 showing hourly mean values for Dombås. Columns include DAY, hours 1-24, and MEAN. Rows are grouped by day (1-30) and include summary rows M, MQ, MD.

Dombás

Horizontal Intensity. H = 13000 γ + Tabular Values.

Table for October 1960. Columns: DAY (D, 1-31), HOUR (1-24), INTENSITY (1-28), MEAN. Rows: D 1-31, M, MQ, MD.

NOVEMBER

Table for November. Columns: DAY (D, 1-30), HOUR (1-24), INTENSITY (1-28), MEAN. Rows: D 1-30, M, MQ, MD.

DECEMBER

Table for December. Columns: DAY (D, 1-31), HOUR (1-24), INTENSITY (1-28), MEAN. Rows: D 1-31, M, MQ, MD.

Dombås

Vertical Intensity. Z = 47000 γ + Tabular Values.

APRIL 1960

HOURLY MEAN VALUES.

GMT

DAY	1	2	3	4	5	6	7	8	9	10	11	12	13	14	15	16	17	18	19	20	21	22	23	24	25	26	27	28	29	30	MEAN	
D 1	777	807	877	957	687	717	752	754	717	667	700	752	417	147	367	87	357	567	677	907	1037	1057	897	782	686						686	
D 2	687	847	617	648	729	696	759	784	818	848	866	849	810	781	763	777	779	784	783	777	767	751	751	785	768						768	
D 3	691	608	700	658	580	670	705	744	760	751	765	774	785	777	775	774	769	773	772	777	769	766	763	765	736						736	
D 4	761	766	766	766	766	767	765	761	760	761	763	764	767	765	770	780	796	800	793	778	748	768	676	735	760						760	
D 5	750	711	704	702	705	730	756	760	752	757	760	765	768	762	797	787	818	825	837	801	769	760	744	748	761						761	
D 6	756	761	760	762	760	760	759	757	758	754	752	750	766	783	785	778	764	762	762	758	758	688	727	753	757						757	
D 7	723	718	696	711	715	735	748	757	758	753	747	742	744	750	758	785	828	878	765	767	735	680	680	785	747						747	
D 8	739	718	674	678	728	755	745	738	745	754	767	771	768	758	763	778	809	810	770	760	760	766	749	730	751						751	
D 9	721	709	710	703	691	706	716	726	741	750	751	755	755	755	757	758	759	758	757	759	761	756	750	747	740						740	
D 10	740	741	744	746	746	750	740	738	746	741	741	745	775	798	804	817	830	838	868	738	784	680	688	583	750						750	
D 11	830	790	735	717	740	762	769	767	766	762	768	766	769	758	760	787	794	787	829	779	776	709	661	582	757						757	
D 12	586	880	574	614	670	720	749	746	764	760	756	756	772	809	801	786	780	792	802	778	767	704	683	688	788						788	
D 13	696	689	671	702	706	672	685	688	739	749	747	744	748	757	761	761	766	764	754	765	758	754	750	709	731						731	
D 14	663	689	729	739	745	757	744	754	755	756	760	760	768	763	759	761	766	760	777	767	755	742	699	693	745						745	
D 15	707	711	728	720	711	624	684	719	729	734	740	747	747	755	756	770	788	770	759	756	756	757	757	738	736						736	
D 16	702	668	700	722	742	747	747	747	740	742	748	755	769	841	879	943	895	842	828	783	747	717	712	578	758						758	
D 17	588	708	601	631	704	714	739	758	768	773	783	785	754	755	757	759	767	788	820	824	791	734	686	719	756						756	
D 18	679	549	606	693	718	739	747	759	754	758	772	785	776	777	776	780	790	794	778	765	758	749	748	713	740						740	
D 19	736	747	746	756	756	760	761	758	756	751	748	744	746	749	749	749	749	749	749	749	749	749	749	750	750						750	
D 20	750	749	750	749	750	751	752	748	739	736	731	730	730	738	739	740	742	745	746	746	746	747	748	747	747	744						744
D 21	747	747	747	748	748	748	748	741	736	732	728	722	726	730	736	740	741	745	742	748	748	746	745	741	738	740						740
D 22	729	737	739	741	740	739	739	735	734	732	729	727	729	735	742	750	752	754	749	743	748	742	742	741	740	740						740
D 23	742	742	745	745	741	742	737	735	739	723	723	723	723	729	735	752	746	754	756	748	748	740	717	654	784	743						743
D 24	704	719	929	759	689	692	716	738	754	759	766	784	778	859	842	822	811	837	821	767	771	579	587	525	748						748	
D 25	729	587	599	691	727	734	753	776	779	787	789	817	819	840	871	829	866	755	807	827	720	629	601	569	747						747	
D 26	567	621	629	676	713	734	748	765	780	779	771	760	757	771	802	831	835	837	816	790	773	743	718	599	748						748	
D 27	697	740	759	763	763	758	759	758	752	750	748	747	747	768	788	808	810	837	781	785	718	813	820	692	757						757	
D 28	630	850	510	550	722	762	711	743	743	805	838	825	854	877	862	881	862	901	855	845	839	739	722	658	757						757	
D 29	622	663	610	725	668	659	665	733	752	770	770	794	828	810	827	816	817	820	814	751	769	768	698	588	734						734	
D 30	571	639	360	350	542	593	672	704	709	741	766	785	910	840	660	595	470	400	620	735	810	870	787	783	663						663	
M	701	711	691	704	713	723	736	746	751	755	759	764	760	758	765	759	769	773	780	775	768	740	719	692	742						742	
MQ	737	738	738	739	737	741	743	742	741	740	737	736	737	741	745	747	749	750	749	749	749	748	746	745	743						743	
MD	675	725	675	655	644	687	711	737	737	745	767	784	749	699	701	632	654	696	749	806	845	802	739	701	748						748	

MAY

DAY	1	2	3	4	5	6	7	8	9	10	11	12	13	14	15	16	17	18	19	20	21	22	23	24	25	26	27	28	29	30	31	MEAN
D 1	782	769	720	755	780	783	779	770	765	754	753	756	777	789	774	779	782	789	788	803	780	666	748	767	767							767
D 2	767	763	755	748	763	781	778	780	779	776	770	771	778	789	788	784	792	785	777	780	768	758	756	768	767							767
D 3	760	760	765	766	762	761	761	765	754	755	765	765	763	770	780	780	785	787	778	768	769	766	761	760	767							767
D 4	762	760	763	767	766	761	758	753	750	747	741	740	746	753	761	763	761	762	764	767	762	762	739	723	739							739
D 5	753	760	761	760	757	758	756	753	750	743	742	738	743	749	755	760	758	757	760	763	745	718	730	698	749							749
D 6	650	683	732	734	739	744	750	748	749	742	739	733	773	835	861	834	850	832	660	664	757	885	780	703	758						758	
D 7	711	780	684	652	738	744	765	765	758	759	759	763	789	842	913	869	868	923	873	891	733	707	640	629	773						773	
D 8	662	714	732	748	680	640	690	724	734	808	818	780	837	938	840	500	819	875	819	799	778	761	758	729	768						768	
D 9	756	760	765	763	765	771	770	762	757	752	755	762	784	807	820	816	814	790	788	760												

Vertical Intensity. Z = 47000 γ + Tabular Values.

JULY 1960

HOURLY MEAN VALUES.

GMT

DAY	1	2	3	4	5	6	7	8	9	10	11	12	13	14	15	16	17	18	19	20	21	22	23	24	25	26	27	28	29	30	31	MEAN	
1	706	719	675	681	725	728	743	748	738	746	746	754	761	773	796	828	816	796	769	770	755	756	738	751	746	750	750	750	750	750	750	750	750
M	712	697	699	705	725	729	734	740	744	746	748	757	767	774	777	782	781	777	769	758	756	738	728	714							744		

AUGUST

DAY	1	2	3	4	5	6	7	8	9	10	11	12	13	14	15	16	17	18	19	20	21	22	23	24	25	26	27	28	29	30	31	MEAN
1	707	726	739	726	704	700	711	721	730	740	751	762	756	782	790	764	754	756	757	758	755	747	715	698								740
M	698	696	698	710	717	714	725	735	740	743	743	749	755	764	773	779	778	776	774	766	754	742	724	714							740	

SEPTEMBER

DAY	1	2	3	4	5	6	7	8	9	10	11	12	13	14	15	16	17	18	19	20	21	22	23	24	25	26	27	28	29	30	31	MEAN
1	749	754	754	755	758	759	759	754	751	744	748	742	745	750	757	758	755	753	750	751	751	750	740	739								751
M	687	688	704	718	723	735	745	752	758	761	762	762	767	777	787	791	786	787	780	767	758	739	714	679							747	

Dombás

Vertical Intensity. Z = 47000 γ + Tabular Values.

OCTOBER 1960

HOURLY MEAN VALUES.

GMT

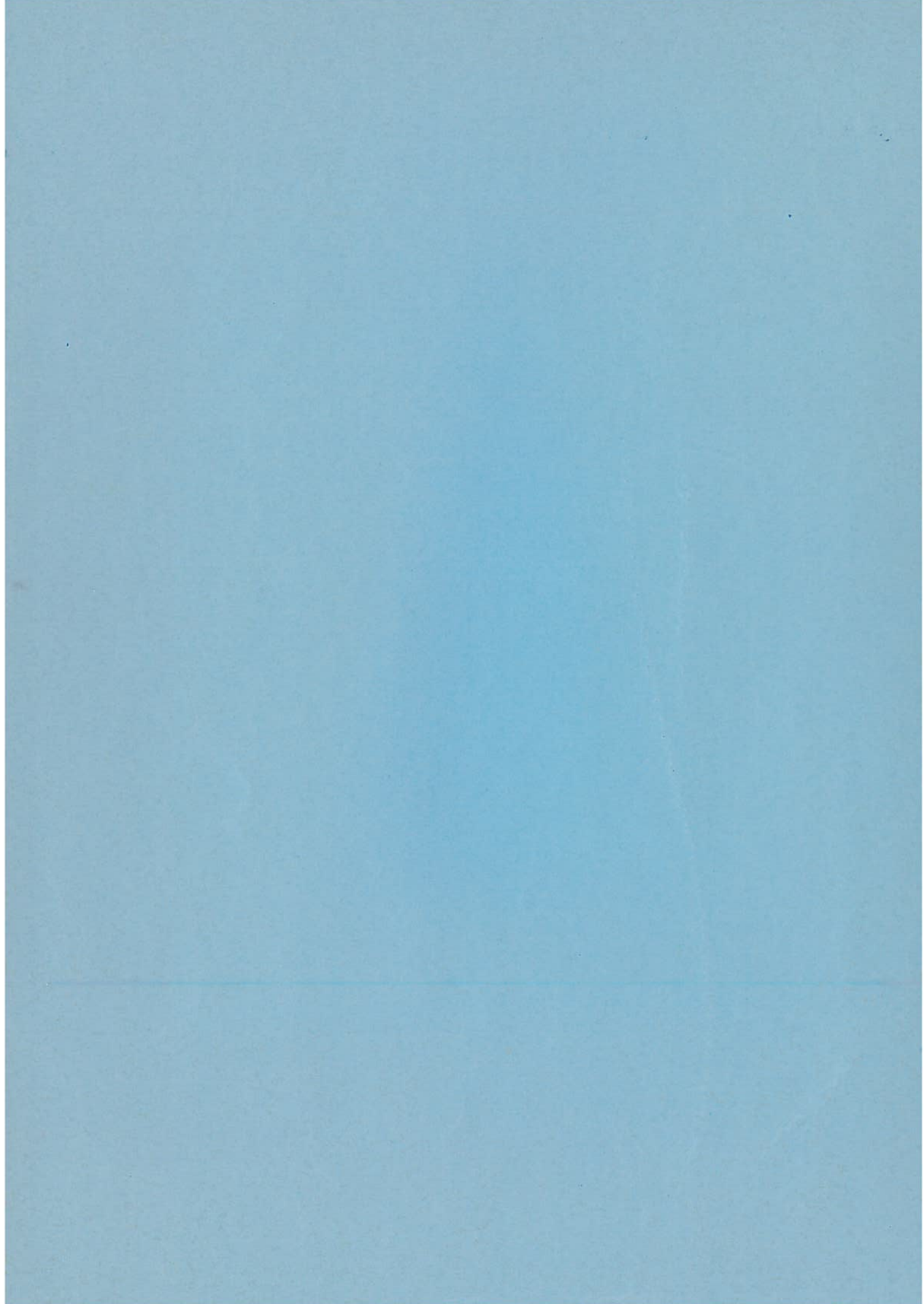
Table for October 1960 showing vertical intensity data for days 0-31. Columns include Day, Hour (1-24), and Mean. Rows are labeled with day numbers and letters (D, O, Q, M, MD).

NOVEMBER

Table for November 1960 showing vertical intensity data for days 1-30. Columns include Day, Hour (1-24), and Mean. Rows are labeled with day numbers and letters (D, O, Q, M, MD).

DECEMBER

Table for December 1960 showing vertical intensity data for days 0-31. Columns include Day, Hour (1-24), and Mean. Rows are labeled with day numbers and letters (D, O, Q, M, MD).



Magnetic data from the Magnetic Station at Dombås may also be found in "Publikasjoner fra det Norske Institutt for Kosmisk Fysikk", Nos.:

9. O. KROGNESS and K. F. WASSERFALL: "Results from the Magnetic Station at Dombås 1916-33." Det Magnetiske Byrå, 1936.
10. K. F. WASSERFALL: "Some of the most characteristic features in the variation of magnetic elements." Det Magnetiske Byrå, 1937.
13. B. TRUMPY and K. F. WASSERFALL: "Results at the Magnetic Station at Dombås 1934-36." — Det Magnetiske Byrå, 1938.
16. K. F. WASSERFALL: "Contribution to the study of the variation in magnetic elements." — Det Magnetiske Byrå, 1939.
18. B. TRUMPY and K. F. WASSERFALL: "Results from the Magnetic Station at Dombås 1937 and 1938." — Det magnetiske Byrå, 1940.
20. — "Results from the Magnetic Station at Dombås 1939." — Det Magnetiske Byrå, 1941.
23. — "Results from the Magnetic Station at Dombås 1940 and 1941." — Det Magnetiske Byrå, 1944.
28. — "Results from the Magnetic Station at Dombås 1942-45." — Det Magnetiske Byrå, 1949.
35. K. F. WASSERFALL: "Results from the Magnetic Station at Dombås 1946, 1947 and 1948." — Det Magnetiske Byrå, 1953.
39. GURO GJELLESTAD, PER EINBU, HELGE DALSEIDE: "The Magnetic Station at Dombås. — Description of the new station and observation 1952." (Appendix: Storminess Values for 1949-1951). — Magnetisk Byrå, 1957.
42. GURO GJELLESTAD and HELGE DALSEIDE: "The Magnetic Station at Dombås. — Observations 1953." — Magnetisk Byrå, 1958.
43. — "The Magnetic Station at Dombås. — Observations 1954." — Magnetisk Byrå, 1958.
44. — "The Magnetic Station at Dombås. — Observations 1955." — Magnetisk Byrå, 1959.
47. — "The Magnetic Station at Dombås. — Observations 1956." — Magnetisk Byrå, 1960.
48. — "The Magnetic Station at Dombås. — Observations 1957." — Magnetisk Byrå, 1960.
49. — "The Magnetic Station at Dombås. — Observations 1958." — Magnetisk Byrå, 1960.

Magnetic data from Dombås continue in the present series.